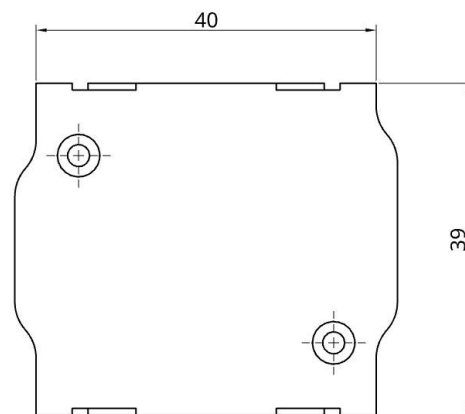


TQ KRT2 Adapter BLE Bluetooth

sky-map EXPERIMENTAL



Bluetooth Low Energy adapter (BLE) for a TQ KRT2 VHF transceiver (aviation radio). The adapter is compatible with radios of the following series:

- KRT2-S
- KRT2-F
- KRT2-P

The adapter was developed as an interface for the TQ KRT2 for compatible navigation apps (e.g. sky-map). It enables data transfer between the navigation app and the radio hardware (BLE ↔ RS-232). The adapter is simply plugged between the existing wiring and the radio and holds securely to the housing thanks to the Conec latch system.

No additional power supply is required. The adapter can be operated with 12 V and 24 V on-board voltage. An internal mini-fuse (125 mA) is integrated in the housing.

The power supply is protected against reverse polarity and short-circuit-proof. **No further electrical or mechanical work required!**

Important: This is a prototype for experimental use only!

1 Radio Configuration

No further configuration is required on the radio.

2 Connector Pin Assignment

This is an excerpt from the TQ installation manual:

6.9.2 Connector Pin-Configuration

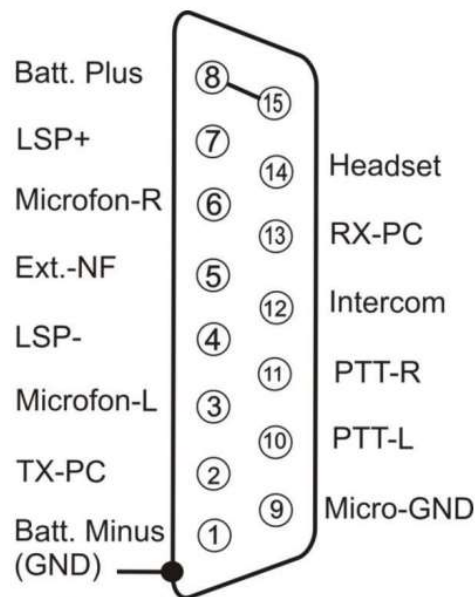
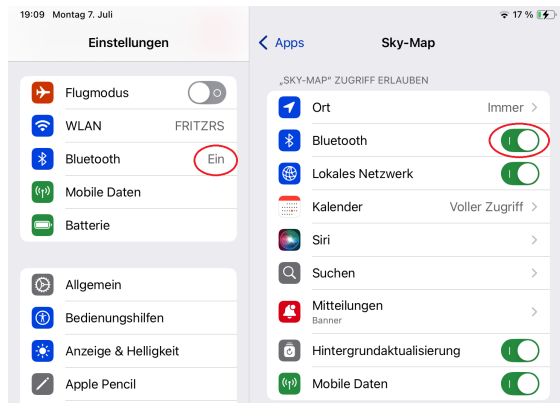


Figure 7: Connector pinout

Figure 1: KRT2 Connector Pin Assignment

3 Configuration in sky-map

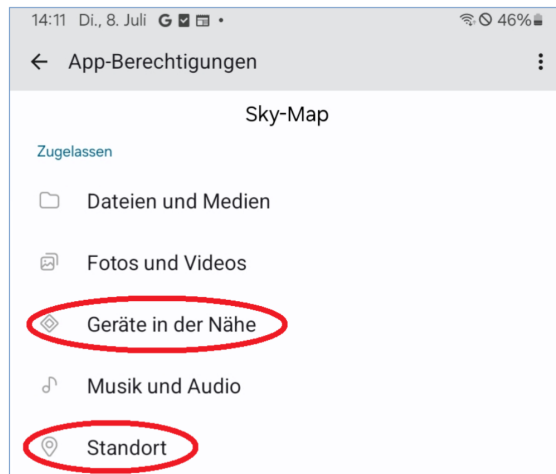
3.1 Prerequisites and Configuration in iOS



iOS Settings:

1. Bluetooth must be enabled in the iOS settings.
2. Under *Apps/sky-map*, access to Bluetooth must be granted.

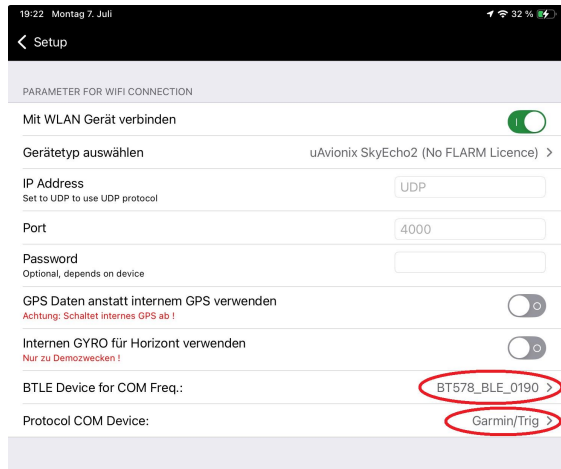
3.2 Prerequisites and Configuration in Android



Android Settings:

1. Bluetooth must be enabled in the Android settings.
2. Under *Apps/sky-map*, access to **Nearby devices** and **Location** must be granted.

3.3 Establishing Connection with the Adapter



The screenshot shows the 'Setup' screen of the SD-Link application. The title bar at the top shows the time '19:22' and date 'Montag 7. Juli'. The status bar shows signal strength, Wi-Fi, and battery at 82%. The screen is titled 'Setup' with a back arrow. Below the title is a section 'PARAMETER FOR WIFI CONNECTION'. The first option is 'Mit WLAN Gerät verbinden' with a toggle switch turned on. The second option is 'Gerätetyp auswählen' with a dropdown menu showing 'uAvionix SkyEcho2 (No FLARM Licence)'. The third option is 'IP Address' with a dropdown menu showing 'UDP'. The fourth option is 'Port' with a text input field containing '4000'. The fifth option is 'Password' with a text input field. The sixth option is 'GPS Daten anstatt internem GPS verwenden' with a toggle switch turned off. The seventh option is 'Internen GYRO für Horizont verwenden' with a toggle switch turned off. The eighth option is 'BTLE Device for COM Freq.:' with a dropdown menu showing 'BT578_BLE_0190'. The ninth option is 'Protocol COM Device:' with a dropdown menu showing 'Garmin/Trig'. Both dropdown menus are circled in red.

3. Turn on the radio with the adapter.
4. Open in sky-map:
Menü → Setup → Wireless Interface Setup
5. Select **SD-KRT2-E** (if multiple are available).
6. Select the appropriate protocol for your radio:
TQ KRT2
7. Exit the setup.

At the next program start, sky-map will automatically reconnect to the last selected BTLE adapter.

Important: For the automatic connection at program start to work, the radio and BTLE adapter must be turned on **before** sky-map is started. If this is not the case, the connection must be established manually by accessing the setup (see step 4).

4 Contact

For problems, questions, suggestions, or even positive feedback, please contact:

LayCom Vision GmbH – SD-Link
Michael Hoffmann

Chausseestr. 46
D-15518 Rauen, Germany

E-Mail: info@sdlink.de
Phone: +49 3361 710253

