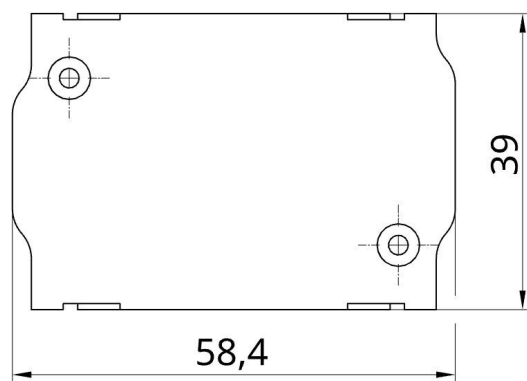


f.u.n.k.e ATR833 Adapter BLE Bluetooth

SkyDemon (SD) EXPERIMENTAL



Bluetooth Low Energy adapter (BLE) for a f.u.n.k.e ATR833 VHF transceiver (aviation radio). The adapter was developed as an interface for a f.u.n.k.e ATR833 to the navigation software SkyDemon (SD). It implements the data transfer between the navigation software (SD) and the radio hardware (BLE ↔ RS-232). The adapter simply connects to the radio.

No additional power supply is required. The adapter is powered through the radio. A self-resetting fuse is integrated in the housing. The power supply is protected against reverse polarity and short-circuit proof.

No further electrical work necessary!

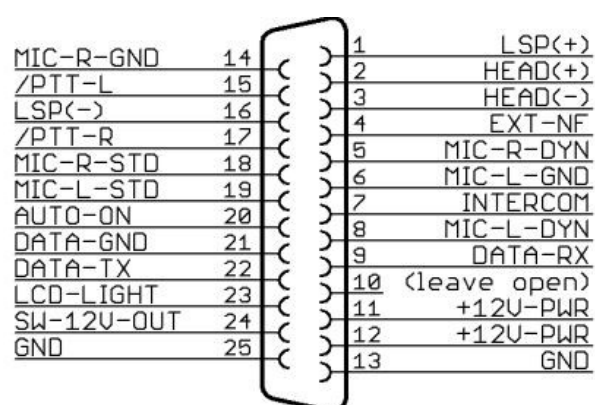
Important: This is a prototype for experimental use only!

1 Radio Configuration

No further configuration is required on the radio.

2 Connector Pin Assignment

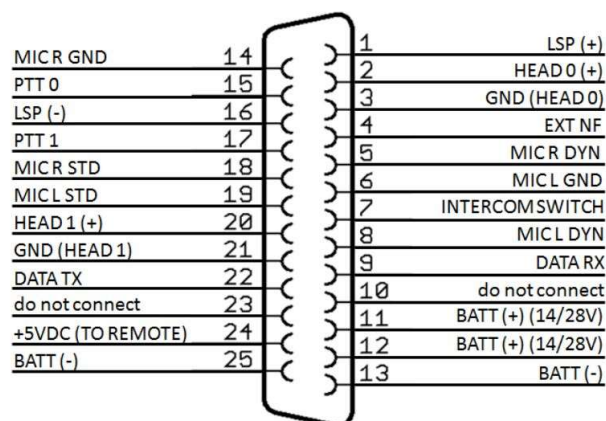
This is an excerpt from the f.u.n.k.e installation manual:



D-SUB Connector Female
seen from solder side

Figure 1: Old Version (ATR833)

4.7.2 Connector – Pin Allocation



D-SUB Connector 25 Pin Female
seen from solder side

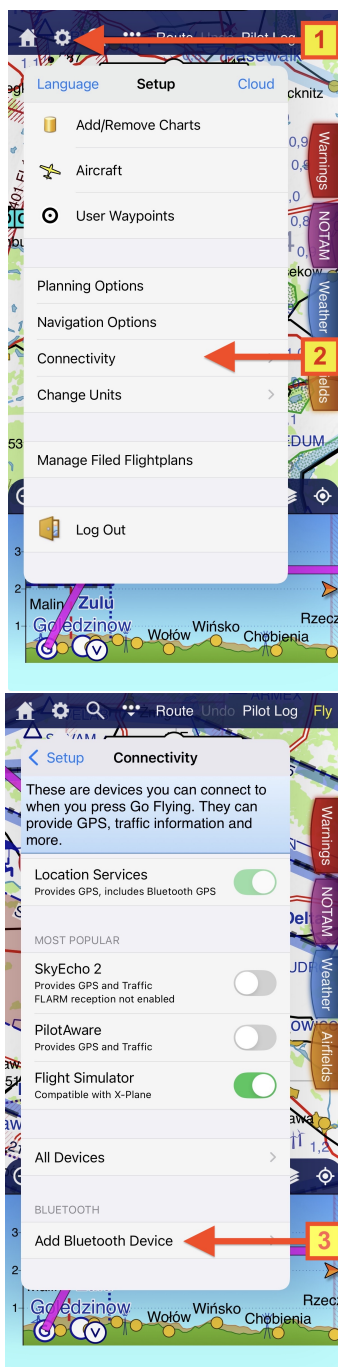
Figure 2: New Version (ATR833-II)

Pin	Names	Functionality
1	LSP(+)	Output external Loudspeaker Positive
2	HEAD-0 (+)	Output Headset-Speaker Positive
3	GND (HEAD-0)	Output Headset-Speaker Negative
4	EXT-NF	Input external Audio-Signal
5	MIC R DYN	Input Microphone Right Dynamic
6	MIC L GND	Input Microphone Left Ground
7	INTERCOM SWITCH	Intercom Activation Switch (connect to ground for Intercom activation)
8	MIC L DYN	Input Microphone Left Dynamic
9	DATA-RX	RS232 Receive (for Remote Control)

10	do not connect	Pin 10 is used by adapters for device identification
11	+14 / +28V-PWR	Input Power Supply +12V
12	+14 / +28V-PWR	Input Power Supply +12V
13	BATT (-)	Ground Side of Power Supply
14	MIC R GND	Input Microphone Right Ground
15	PTT-0	Push-to-Talk 0 (connect to ground for transmitting)
16	LSP(-)	Output external Loudspeaker Negative (Not identical to ground!)
17	PTT-1	Push-to-Talk 1 (connect to ground for transmitting)
18	MIC R STD	Input Microphone Right (Headset 1)
19	MIC L STD	Input Microphone Left (Headset 0)
20	HEAD 1 (+)	Output 1 Headset-Speaker Positive
21	GND (HEAD 1)	Output 1 Headset-Speaker Negative
22	DATA-TX	RS232 TX (for Remote Control)
23	N/A	do not connect
24	+5VDC OUT	5VDC Power Supply for Remote Control
25	BATT (-)	Ground Side of Power Supply

3 Configuration in SkyDemon

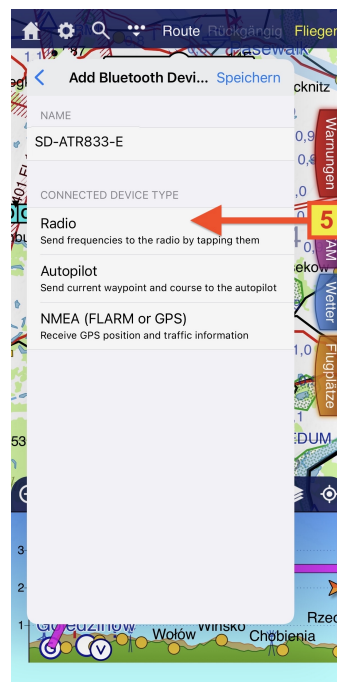
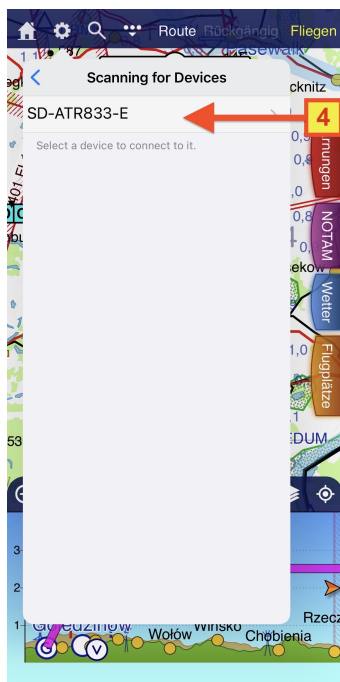
Important: The adapter is not connected via regular Bluetooth settings. BLE devices are usually not displayed there.



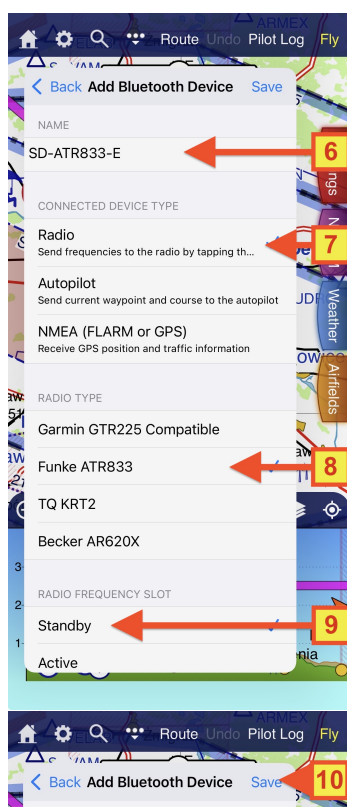
1. Open the configuration menu via the gear icon.

2. Select *Connectivity* in the configuration.

3. In *Connectivity* -> Select *Add Bluetooth Device*.



4. Wait until the search for BLE devices is complete (this may take a moment). Then select the entry **SD-ATR833-E**
5. Select the device type **Radio**.



6. The adapter name can be customized as desired.
7. The device type **Radio** must be selected.
8. Select the radio type **Funke ATR833**.
9. Select whether the standby or active frequency should be set.
10. **Save the settings with Save** - the adapter is now ready to use.

4 Contact

For problems, questions, suggestions, or positive feedback, please contact:

LayCom Vision GmbH – SD-Link
Michael Hoffmann

Chausseestr. 46
D-15518 Rauen, Germany

E-Mail: info@sdlink.de
Phone: +49 3361 710253

