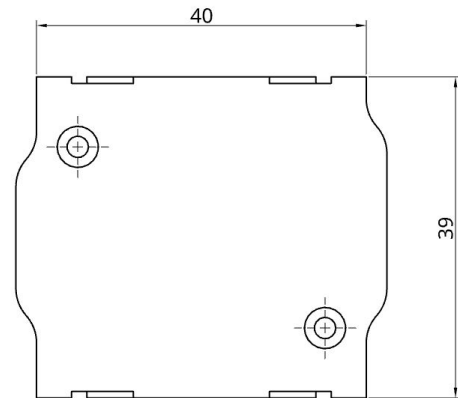


TQ KRT2 - Adapter BLE Bluetooth

SkyDemon (SD) EXPERIMENTAL



Bluetooth Low Energy Adapter (BLE) for TQ KRT2 VHF Transceiver (Aviation Radio)

This adapter is compatible with **KRT2-S**, **KRT2-F**, and **KRT2-P**. It was developed as an interface between a TQ KRT2 and the SkyDemon (SD) navigation software, facilitating data transfer between the navigation software (SD) and the radio hardware via BLE <-> RS-232.

The adapter is **simply plugged between the existing wiring and the radio**, securely attaching to the housing using the Conec Latch system.

No additional power supply required!

The adapter operates on 12 V and 24 V board voltage. An internal mini-fuse (125 mA) is integrated into the housing. The power supply is protected against reverse polarity and short circuits.

No further electrical or mechanical work necessary!

⚠ Please note: This is a prototype for experimental use only!

1. Radio Configuration

No additional configuration on the radio is required.

2. Connector Pinout

This is an excerpt from the TQ installation manual:

6.9.2 Connector Pin-Configuration

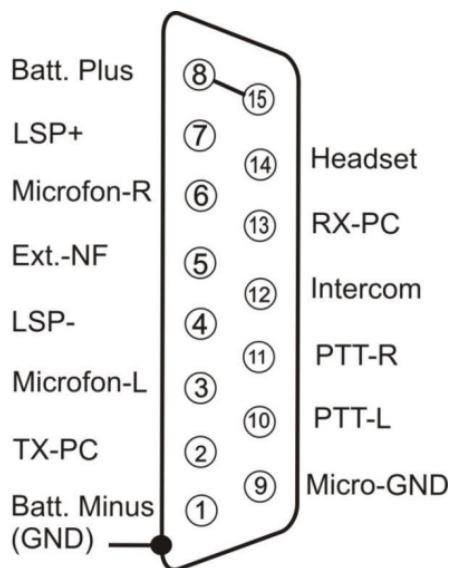


Figure 7: Connector pinout

← Pin 13 of the outgoing connector provides V24 data for connecting additional devices (Multi-Drop)

Pin 13 of the outgoing connector provides V24 data for connecting additional devices (Multi-Drop). This PnP solution allows further hardware control by tapping the signal at Pin 13 and routing it to an autopilot, AV-30, or other compatible devices.

3. Contact Information

For issues, questions, feedback, or positive experiences, please contact:

LayCom Vision GmbH - SD-Link
Michael Hoffmann
Chausseestr. 46
D-15518 Rauen

Germany

Email: info@sdlink.de

Phone: +49 3361 710253

